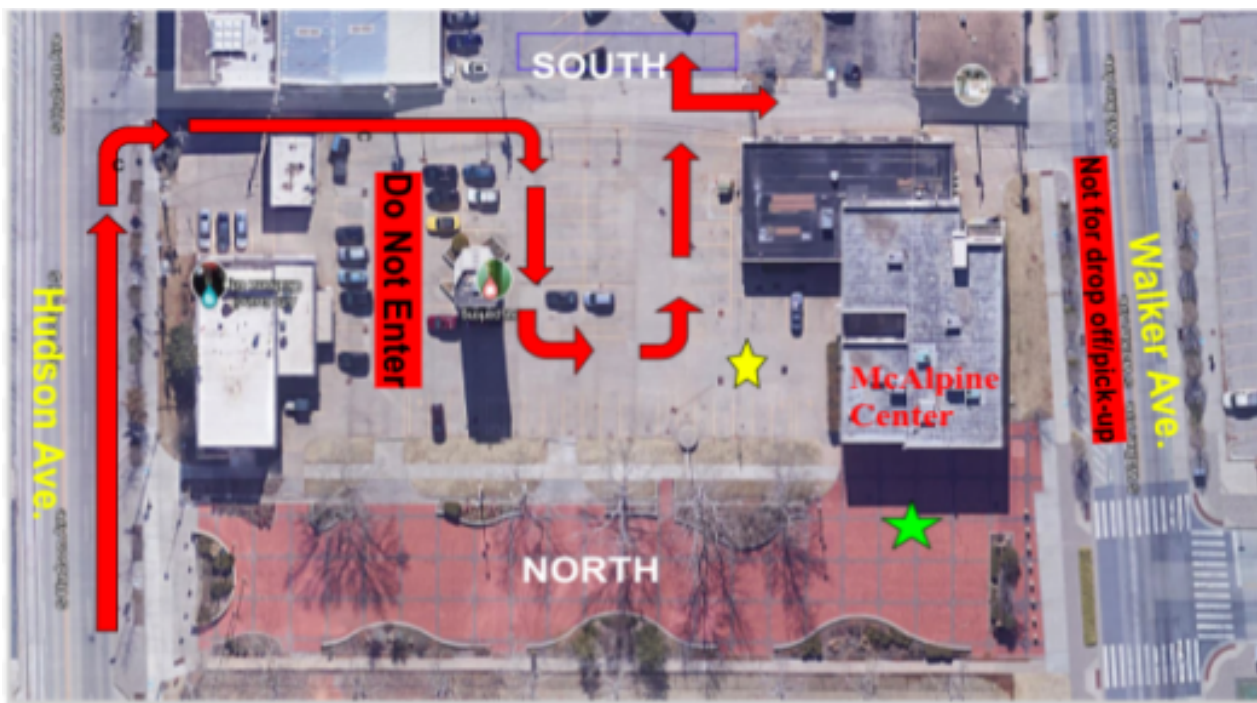


Middle School Arrival/Dismissal Procedures:



Arrival:

- Students may enter the school no earlier than **7:15am**.
- Breakfast will be served from **7:15-7:45am**.
- Drop off traffic must follow the layout shown in the map above (beginning on Hudson Ave.). Please be aware that multiple businesses use this parking lot. Remember to be courteous to workers from neighboring companies that may need to cross our drop off line.
- Car Riders will be dropped off in the staff parking lot identified on the map with a YELLOW star.
- Walkers will be dropped off at the north entrance identified on the map with a GREEN star.
- Students will enter the McAlpine Center/Middle School through the north doors.
- **Lobby doors will be locked at 7:50am. Parents/Guardians must check-in any student arriving after 7:50am. Any child dropped off after 7:50am without an adult checking them in will remain in the front office until a parent/guardian returns to check them in.**

Dismissal:

- Students will be dismissed through the north doors beginning at **3:15pm** on Monday, Tuesday, Thursday, and Friday and at **1:45pm** on Wednesday.
- Pick up traffic must follow the layout shown in the map above. Please be aware that multiple businesses use this parking lot. Remember to be courteous to workers from neighboring businesses that may need to cross our pick up line.
- Car Riders will be picked up in the staff parking lot identified on the map with a YELLOW star.
- Walkers will be picked up at the north entrance identified on the map with a GREEN star.
- Parent/Guardians **must show current/valid SafeSchool ID to the school employee on duty in order to pick up their student.** You will be required to provide an id in the main office if you do not have the proper SafeSchool ID. Thank you for keeping our students safe!